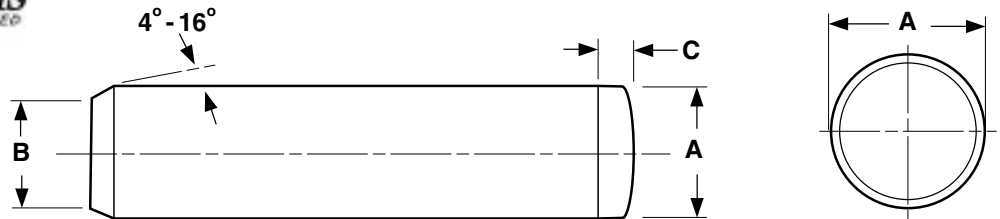




Pins

Dowell Pins



Nominal Size or Nominal Pin Diameter	A			B		C		Suggested Hole Diameter		
	Pin Diameter			Point Diameter		Crown Height or Radius		Max	Min	
	Basic	Max	Min	Max	Min	Max	Min			
1/8	.1250	0.1252	0.1253	0.1251	0.120	0.110	0.041	0.016	0.1250	0.1245
3/16	.1875	0.1877	0.1878	0.1876	0.180	0.170	0.062	0.023	0.1875	0.1870
1/4	.2500	0.2502	0.2503	0.2501	0.240	0.230	0.083	0.031	0.2500	0.2495
5/16	.3125	0.3127	0.3128	0.3126	0.302	0.290	0.104	0.039	0.3125	0.3120
3/8	.3750	0.3752	0.3753	0.3751	0.365	0.350	0.125	0.047	0.3750	0.3745
7/16	.4375	0.4377	0.4378	0.4376	0.424	0.409	0.146	0.055	0.4375	0.4370
1/2	.5000	0.5002	0.5003	0.5001	0.486	0.471	0.167	0.063	0.5000	0.4995
5/8	.6250	0.6252	0.6253	0.6251	0.611	0.595	0.208	0.078	0.6250	0.6245
3/4	.7500	0.7502	0.7503	0.7501	0.735	0.715	0.250	0.094	0.7500	0.7495
7/8	.8750	0.8752	0.8753	0.8751	0.860	0.840	0.293	0.109	0.8750	0.8745
1	1.0000	1.0002	1.0003	1.0001	0.980	0.960	0.333	0.125	1.0000	0.9995
Tolerance on Length					±0.010 in. (all sizes and lengths)					

ANSI B18.8.2

**The value-added source for quality bolts, screws,
nuts, washers and other industrial fasteners.**

3211 West 9th Street, Trainer, PA 19061-5242 TOLL FREE: 1-800-662-7459 LOCAL: 610-485-5700 FAX: 610-485-5877

E-MAIL: sales@coburnmyers.com